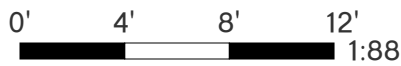
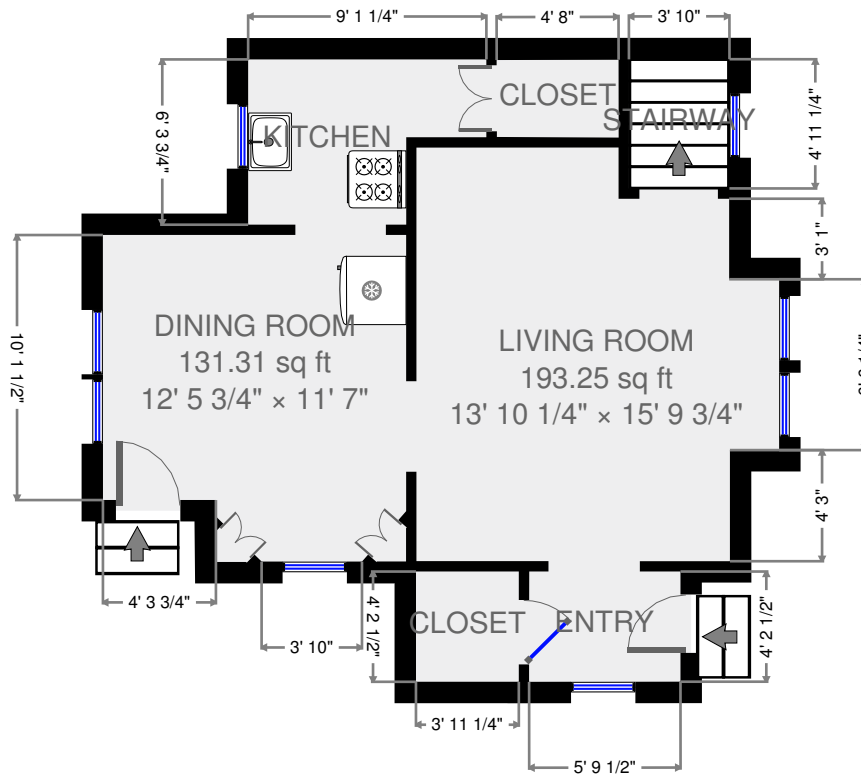


# 1st Floor



THIS FLOORPLAN IS PROVIDED WITHOUT WARRANTY OF ANY KIND. SENSOPIA DISCLAIMS ANY WARRANTY INCLUDING, WITHOUT LIMITATION, SATISFACTORY QUALITY OR ACCURACY OF DIMENSIONS.

## 329 N Dodge St

2016-02-12

**1444** sq ft

**3** Floors

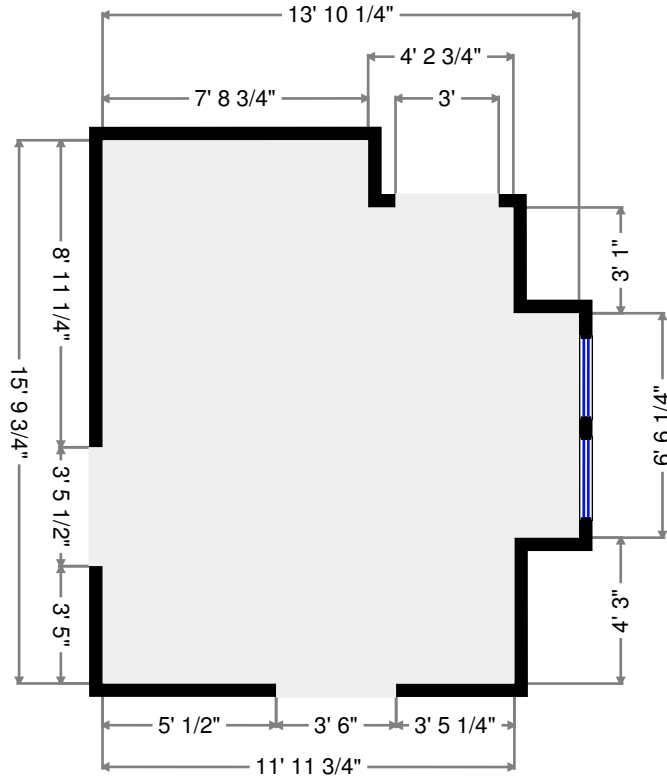
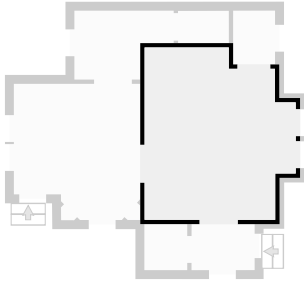
**8** Rooms

**2** Bedrooms

**1** Bathroom

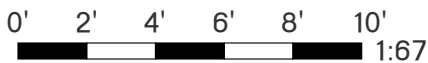
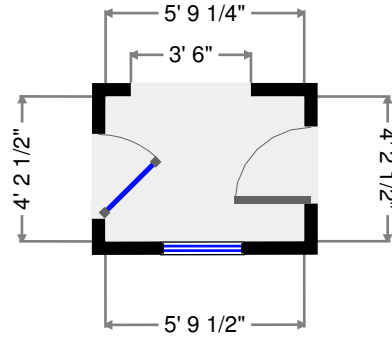
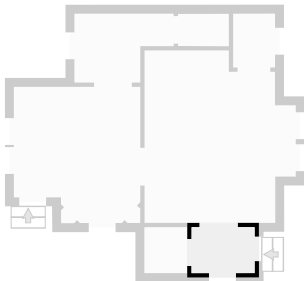
# Living Room

Width: 13' 10 1/4"  
 Length: 15' 9 3/4"  
 Area: 193.25 sq ft  
 Perimeter: 59' 4"  
 Ceiling Height: 8' 5 1/4"



# Entry

Width: 4' 2 1/2"  
 Length: 5' 9 1/4"  
 Area: 24.35 sq ft  
 Perimeter: 19' 11 3/4"  
 Ceiling Height: 8' 5 1/4"



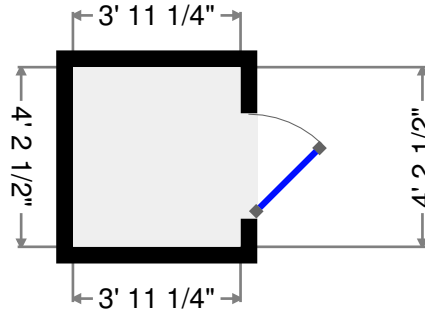
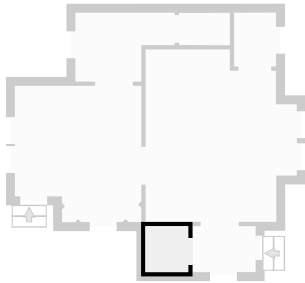
THIS FLOORPLAN IS PROVIDED WITHOUT WARRANTY OF ANY KIND. SENSOPHA DISCLAIMS ANY WARRANTY INCLUDING, WITHOUT LIMITATION, SATISFACTORY QUALITY OR ACCURACY OF DIMENSIONS.

329 N Dodge St

2016-02-12

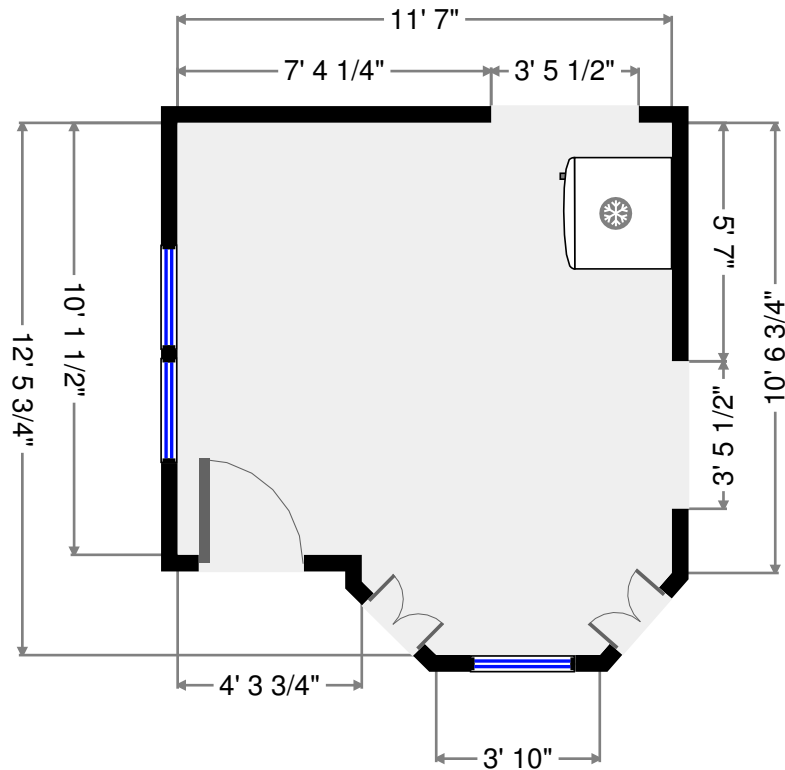
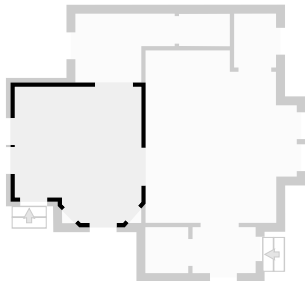
# Closet

Width: 3' 11 1/4"  
 Length: 4' 2 1/2"  
 Area: 16.56 sq ft  
 Perimeter: 16' 3 1/2"  
 Ceiling Height: 8' 5 1/4"



# Dining Room

Width: 11' 7"  
 Length: 12' 5 3/4"  
 Area: 131.31 sq ft  
 Perimeter: 46' 3/4"  
 Ceiling Height: 8' 7 1/4"



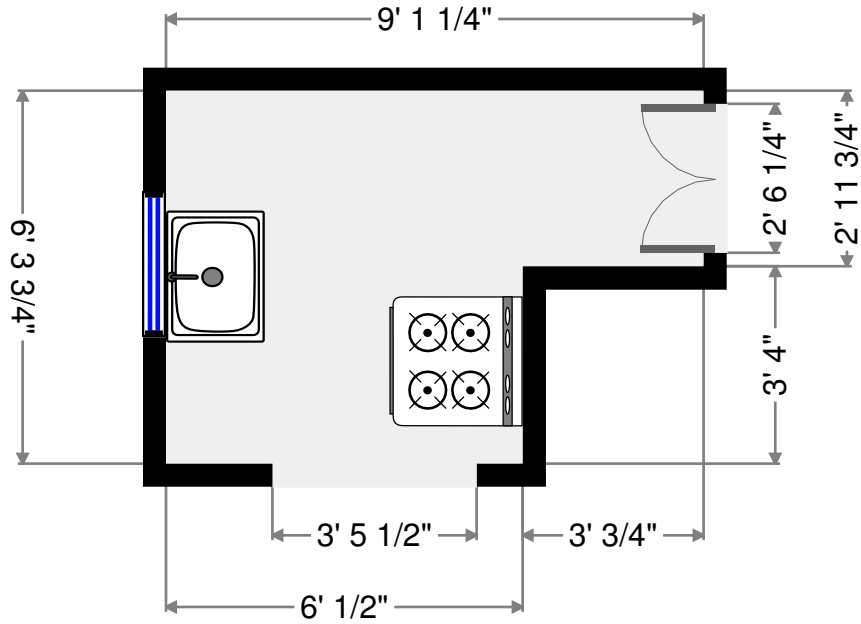
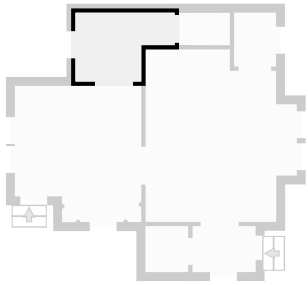
THIS FLOORPLAN IS PROVIDED WITHOUT WARRANTY OF ANY KIND. SENSOPHIA DISCLAIMS ANY WARRANTY INCLUDING, WITHOUT LIMITATION, SATISFACTORY QUALITY OR ACCURACY OF DIMENSIONS.

**329 N Dodge St**

2016-02-12

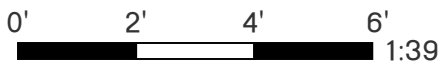
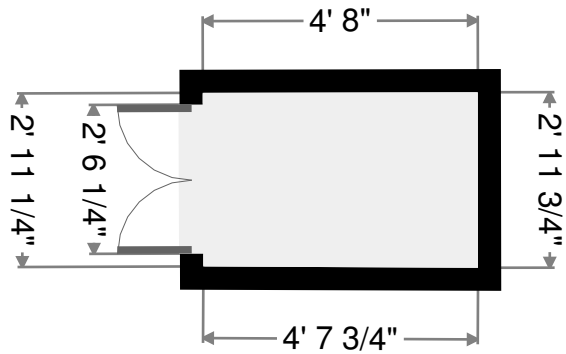
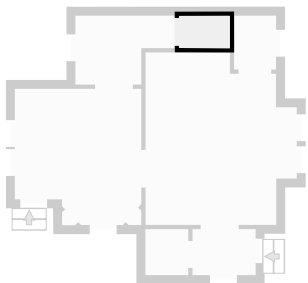
# Kitchen

Width: 6' 3 3/4"  
 Length: 9' 1 1/4"  
 Area: 47.25 sq ft  
 Perimeter: 30' 10"  
 Ceiling Height: 8' 7"



# Closet

Width: 2' 11 1/4"  
 Length: 4' 8"  
 Area: 13.76 sq ft  
 Perimeter: 15' 2 3/4"  
 Ceiling Height: 8' 7"



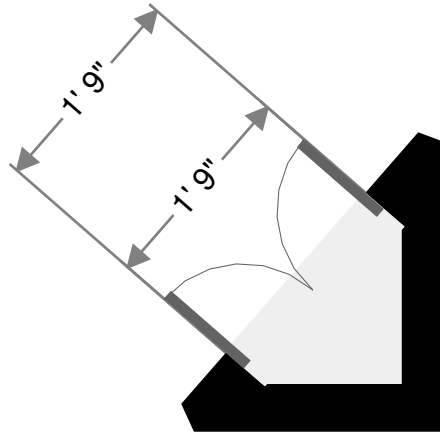
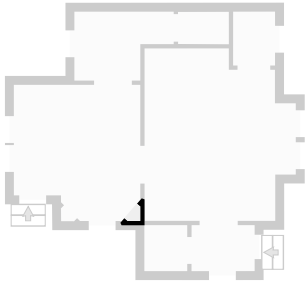
THIS FLOORPLAN IS PROVIDED WITHOUT WARRANTY OF ANY KIND. SENSOPHA DISCLAIMS ANY WARRANTY INCLUDING, WITHOUT LIMITATION, SATISFACTORY QUALITY OR ACCURACY OF DIMENSIONS.

329 N Dodge St

2016-02-12

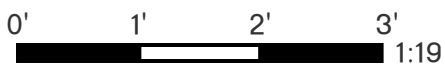
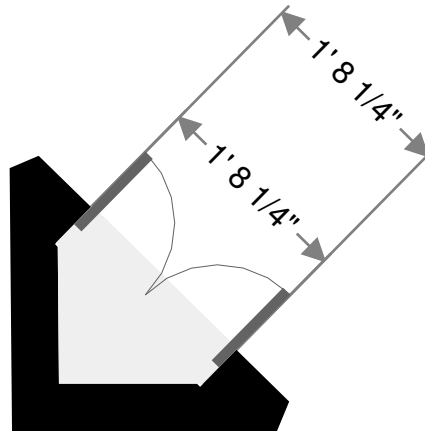
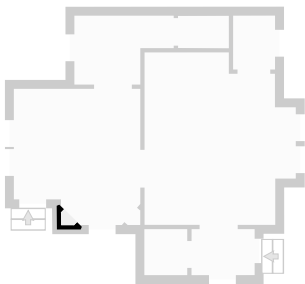
# Closet

Width: 10 1/2"  
Length: 1' 9"  
Area: 0.76 sq ft  
Perimeter: 4' 2 3/4"



# Closet

Width: 0  
Length: 1' 8 1/4"  
Area: 0.70 sq ft  
Perimeter: 4' 1/2"



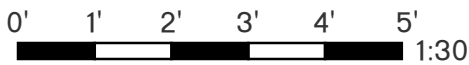
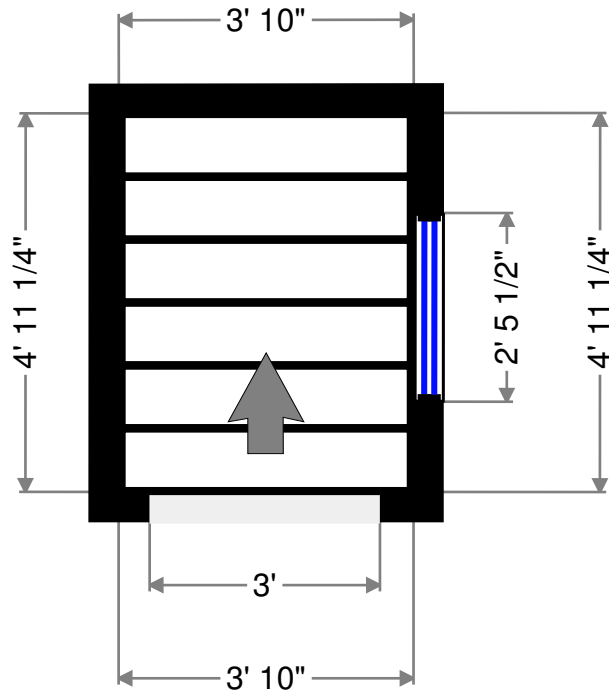
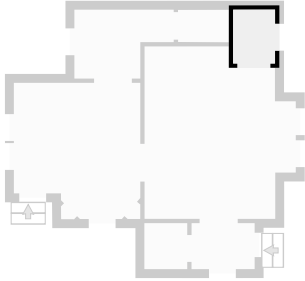
THIS FLOORPLAN IS PROVIDED WITHOUT WARRANTY OF ANY KIND. SENSOPHA DISCLAIMS ANY WARRANTY INCLUDING, WITHOUT LIMITATION, SATISFACTORY QUALITY OR ACCURACY OF DIMENSIONS.

329 N Dodge St

2016-02-12

# Stairway

Width: 3' 10"  
Length: 4' 11 1/4"  
Area: 18.96 sq ft  
Perimeter: 17' 6 3/4"

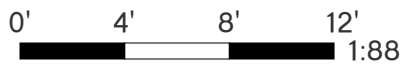
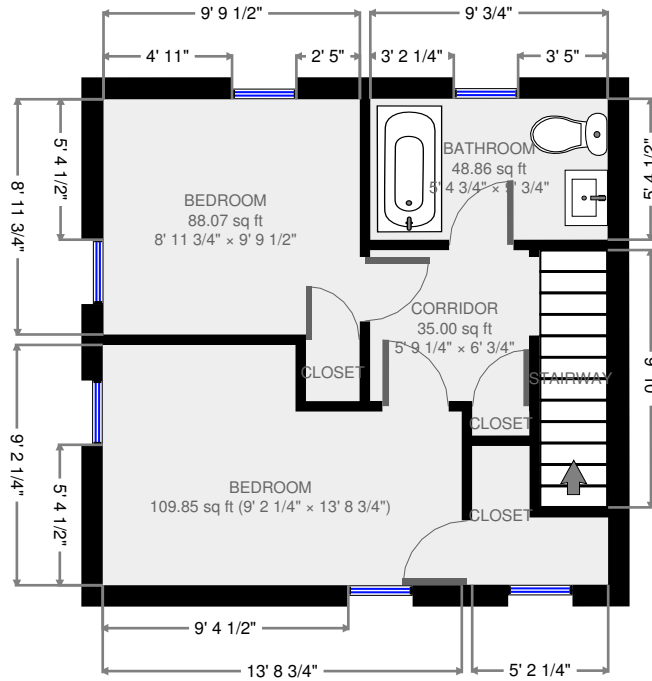


THIS FLOORPLAN IS PROVIDED WITHOUT WARRANTY OF ANY KIND. SENSOPHIA DISCLAIMS ANY WARRANTY INCLUDING, WITHOUT LIMITATION, SATISFACTORY QUALITY OR ACCURACY OF DIMENSIONS.

329 N Dodge St

2016-02-12

# 2nd Floor



329 N Dodge St

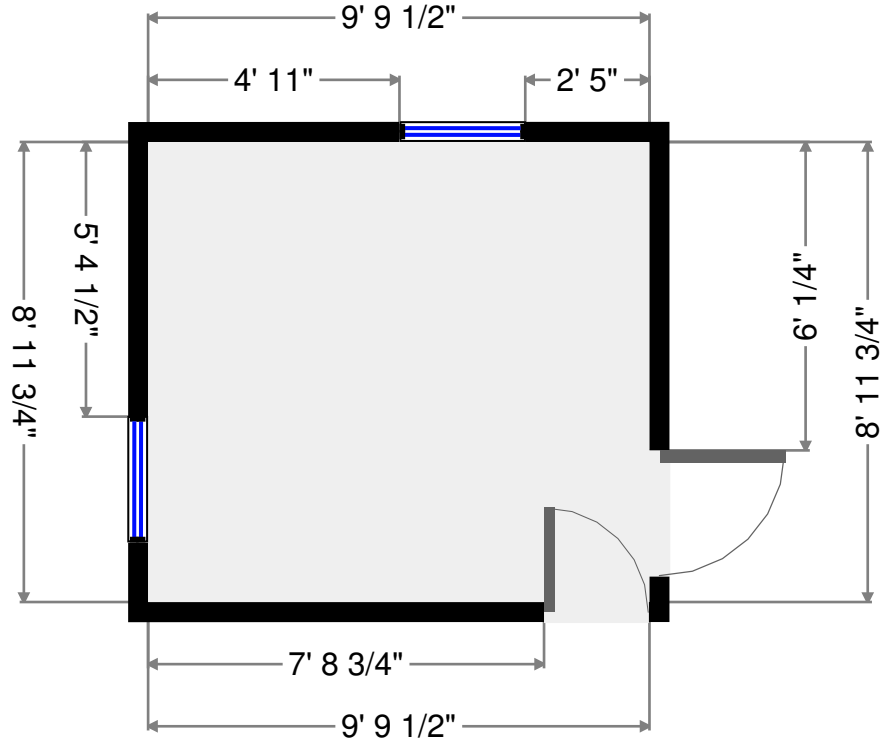
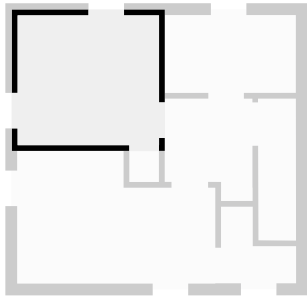
2016-02-12

1444 sq ft  
 3 Floors  
 8 Rooms  
 2 Bedrooms  
 1 Bathroom

THIS FLOORPLAN IS PROVIDED WITHOUT WARRANTY OF ANY KIND. SENSOPIA DISCLAIMS ANY WARRANTY INCLUDING, WITHOUT LIMITATION, SATISFACTORY QUALITY OR ACCURACY OF DIMENSIONS.

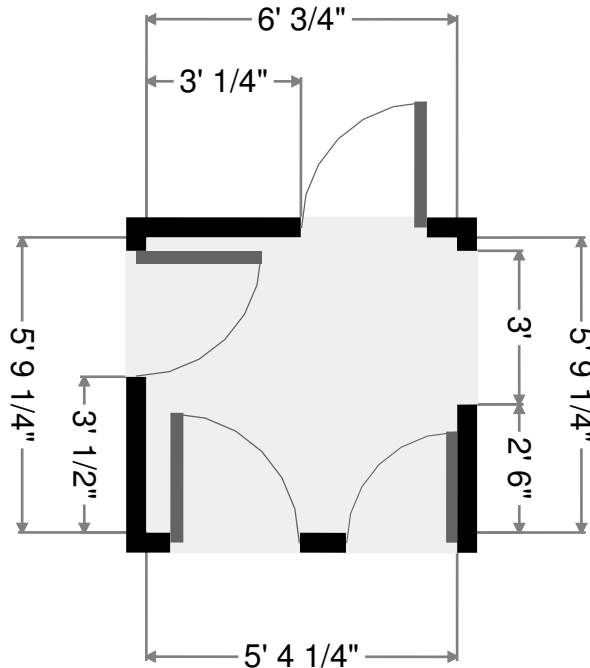
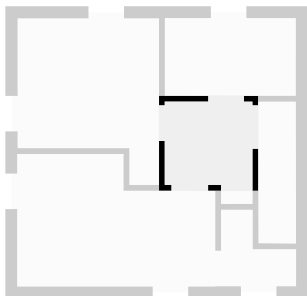
# Bedroom

Width: 8' 11 3/4"  
 Length: 9' 9 1/2"  
 Area: 88.07 sq ft  
 Perimeter: 37' 6 3/4"  
 Ceiling Height: 8' 1 1/4"



# Corridor

Width: 5' 9 1/4"  
 Length: 6' 3/4"  
 Area: 35.00 sq ft  
 Perimeter: 23' 8"  
 Ceiling Height: 8' 1 1/4"



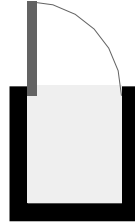
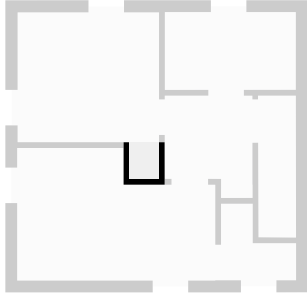
THIS FLOORPLAN IS PROVIDED WITHOUT WARRANTY OF ANY KIND. SENSOPHIA DISCLAIMS ANY WARRANTY INCLUDING, WITHOUT LIMITATION, SATISFACTORY QUALITY OR ACCURACY OF DIMENSIONS.

329 N Dodge St

2016-02-12

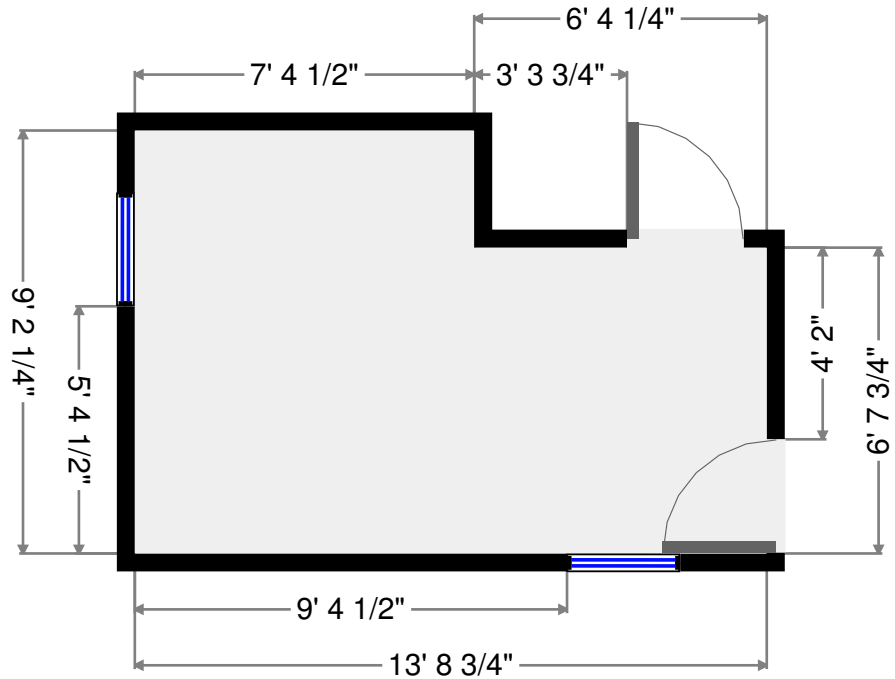
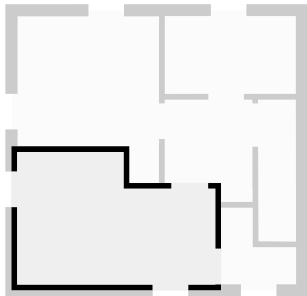
# Closet

Width: 2' 1/2"  
 Length: 2' 1 3/4"  
 Area: 4.39 sq ft  
 Perimeter: 8' 4 3/4"  
 Ceiling Height: 8' 1 1/4"



# Bedroom

Width: 9' 2 1/4"  
 Length: 13' 8 3/4"  
 Area: 109.85 sq ft  
 Perimeter: 45' 9 3/4"  
 Ceiling Height: 8' 4 1/4"



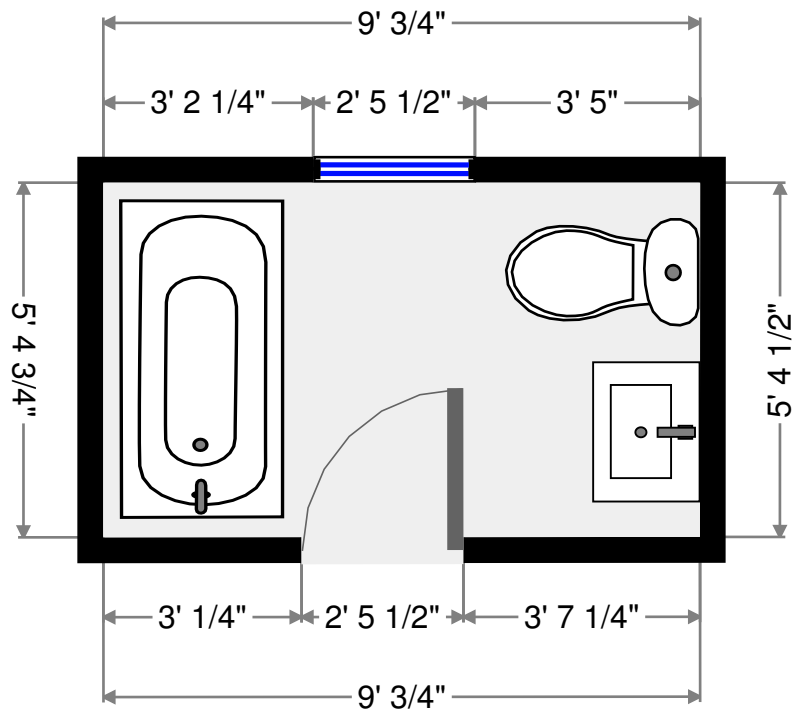
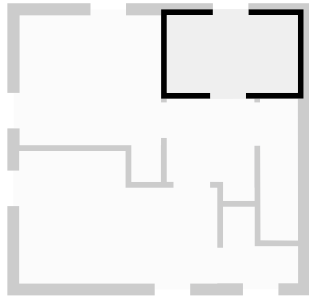
THIS FLOORPLAN IS PROVIDED WITHOUT WARRANTY OF ANY KIND. SENSOPHIA DISCLAIMS ANY WARRANTY INCLUDING, WITHOUT LIMITATION, SATISFACTORY QUALITY OR ACCURACY OF DIMENSIONS.

**329 N Dodge St**

2016-02-12

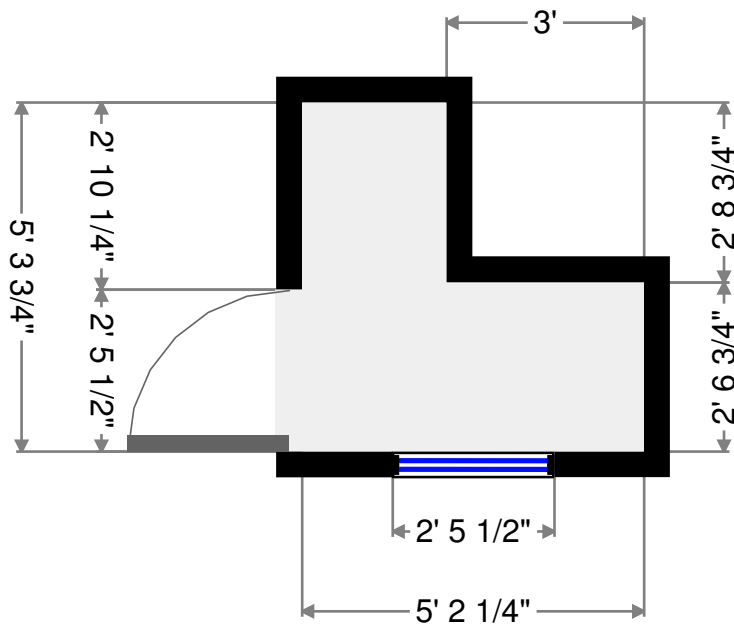
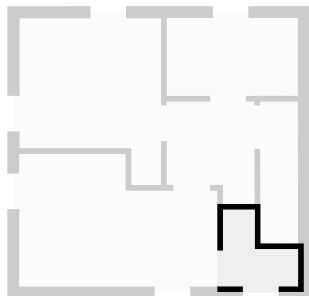
# Bathroom

Width: 5' 4 3/4"  
 Length: 9' 3/4"  
 Area: 48.86 sq ft  
 Perimeter: 28' 11"  
 Ceiling Height: 8' 4 1/4"



# Closet

Width: 5' 2 1/4"  
 Length: 5' 3 3/4"  
 Area: 19.36 sq ft  
 Perimeter: 21'  
 Ceiling Height: 8' 4 1/4"



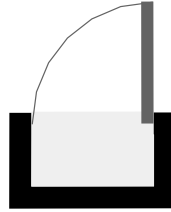
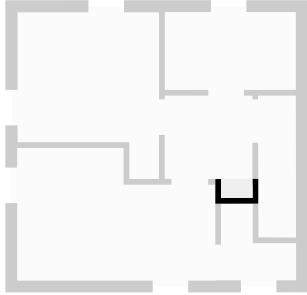
THIS FLOORPLAN IS PROVIDED WITHOUT WARRANTY OF ANY KIND. SENSOPHA DISCLAIMS ANY WARRANTY INCLUDING, WITHOUT LIMITATION, SATISFACTORY QUALITY OR ACCURACY OF DIMENSIONS.

329 N Dodge St

2016-02-12

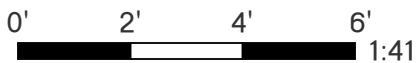
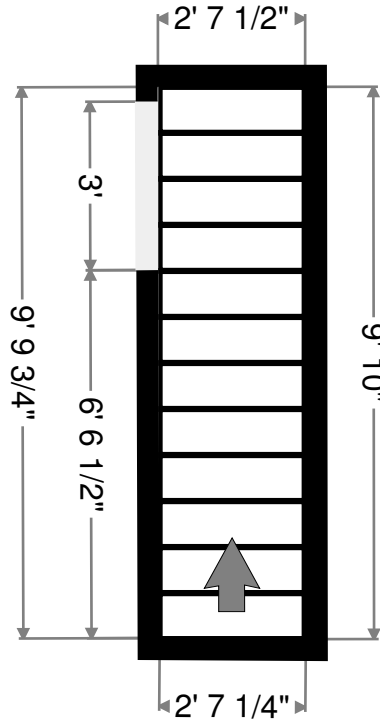
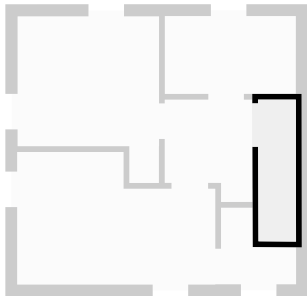
# Closet

Width: 11"  
 Length: 2' 2 1/4"  
 Area: 2.01 sq ft  
 Perimeter: 6' 2 1/2"



# Stairway

Width: 2' 7 1/4"  
 Length: 9' 9 3/4"  
 Area: 25.65 sq ft  
 Perimeter: 24' 10 1/2"

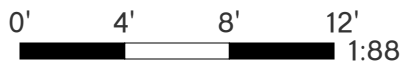
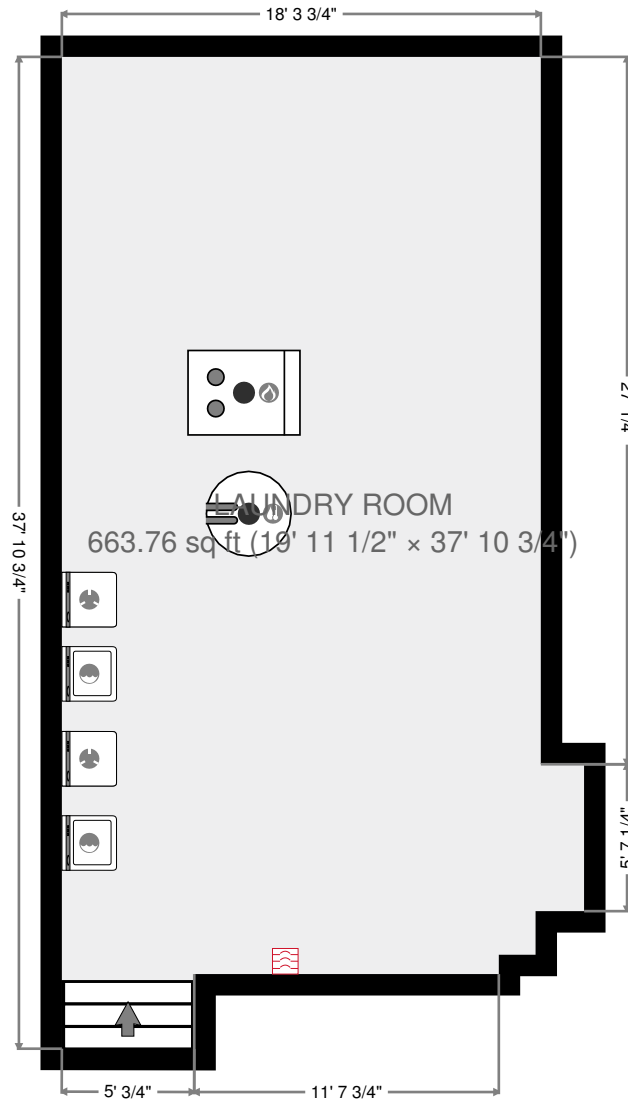


THIS FLOORPLAN IS PROVIDED WITHOUT WARRANTY OF ANY KIND. SENSOPHA DISCLAIMS ANY WARRANTY INCLUDING, WITHOUT LIMITATION, SATISFACTORY QUALITY OR ACCURACY OF DIMENSIONS.

**329 N Dodge St**

2016-02-12

# Basement



329 N Dodge St

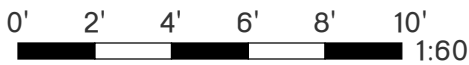
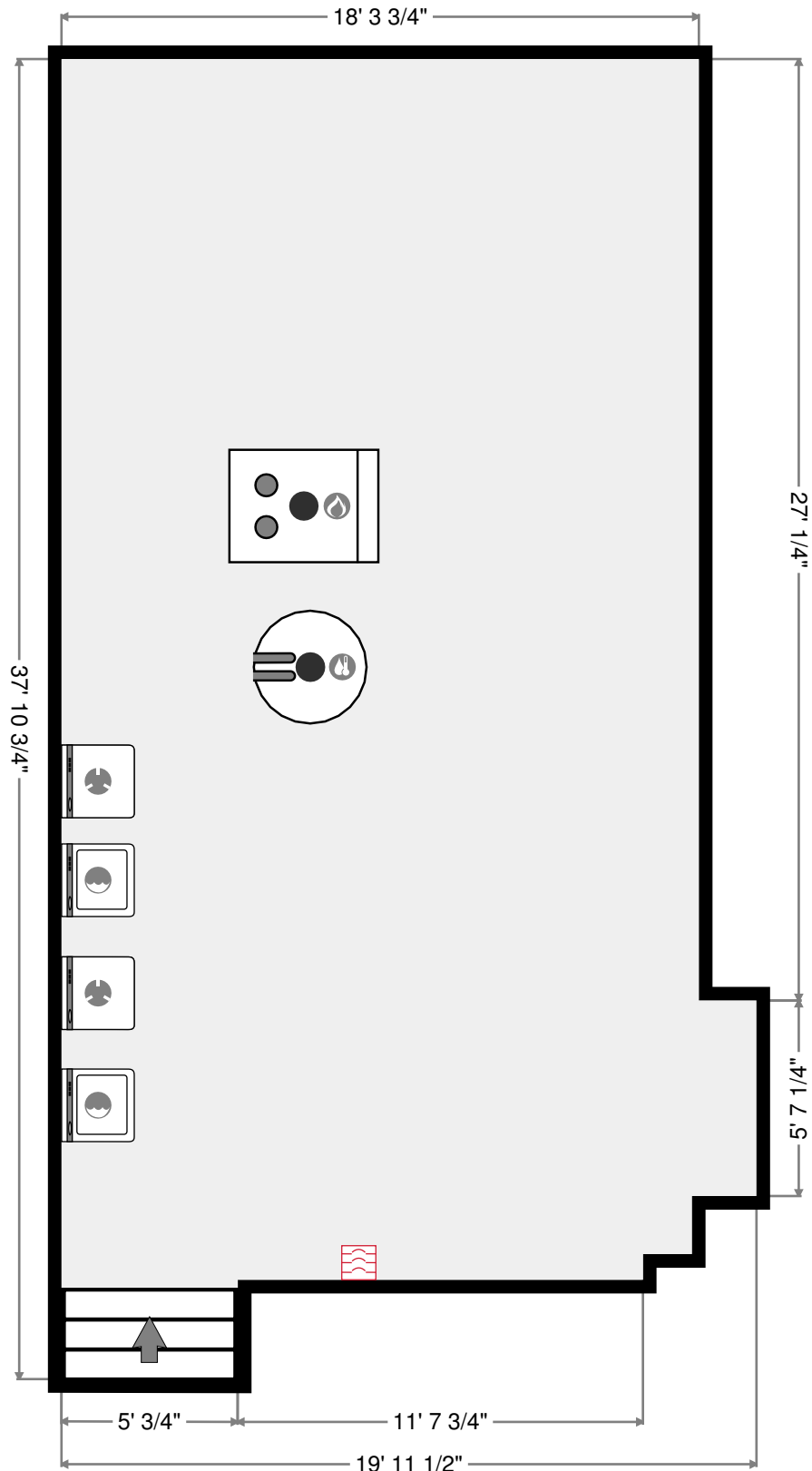
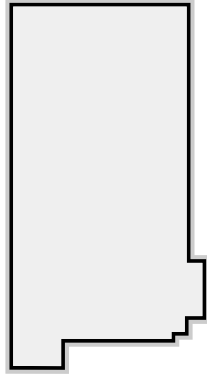
2016-02-12

**1444** sq ft  
**3** Floors  
**8** Rooms  
**2** Bedrooms  
**1** Bathroom

THIS FLOORPLAN IS PROVIDED WITHOUT WARRANTY OF ANY KIND. SENSOPIA DISCLAIMS ANY WARRANTY INCLUDING, WITHOUT LIMITATION, SATISFACTORY QUALITY OR ACCURACY OF DIMENSIONS.

# Laundry Room

Width: 19' 11 1/2"  
 Length: 37' 10 3/4"  
 Area: 663.76 sq ft  
 Perimeter: 115' 8 3/4"  
 Ceiling Height: 8' 4 1/4"



THIS FLOORPLAN IS PROVIDED WITHOUT WARRANTY OF ANY KIND. SENSOPHIA DISCLAIMS ANY WARRANTY INCLUDING, WITHOUT LIMITATION, SATISFACTORY QUALITY OR ACCURACY OF DIMENSIONS.

**329 N Dodge St**

2016-02-12